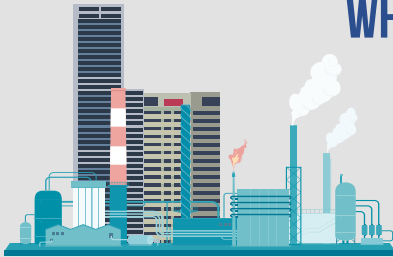


# INFRASTRUCTURE PROTECTION ACT (IPA): ENHANCING SECURITY FOR BUILDINGS AND SENSITIVE LOCATIONS



## WHICH BUILDINGS WILL BE AFFECTED?



Generally, buildings that **house essential services** (such as water and power), are **iconic** or **have high public footfall**.

### Types of Buildings with High Public Footfall

#### Size of the Development

Gross Floor Area (GFA)  
≥ 100,000sqm

and

#### Intended use

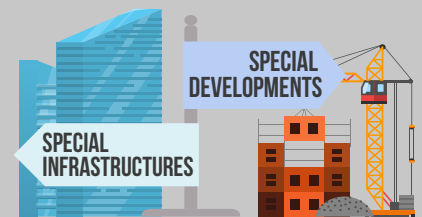
Hotel and Commercial

and

#### Location

Areas with large public congregation such as city centre

These buildings will be designated as '**Special Developments**' (for new buildings) or '**Special Infrastructures**' (for existing buildings).



## ENHANCED POWERS TO PROTECT SENSITIVE LOCATIONS



### No photography of some Protected Areas/Protected Places (PA/PPs) from the outside

- PA/PPs will have signs displayed at the perimeter to warn members of the public
- Authorised Officers can:
  - Direct persons to stop taking photographs
  - Delete the photographs
  - Ask the person to surrender or seize any photographs or photo-taking devices
- Information on exemptions & list of PA/PPs prohibiting photography is available on Centre for Protective Security (CPS)'s website



**AUTHORISED OFFICERS  
MAY EXERCISE  
POWERS IN THE  
SURROUNDING AREA**

### New powers for Authorised Officers to deal with threats in the surrounding area of a PA/PP

- Authorised Officers can:
  - Ask for a person's identity, and why they are there
  - Inspect their belongings, clothing and vehicles
  - Order them to leave and not return for a stipulated time, via a written move-on order
- Signs will be put up in the perimeter of the PA/PP to warn the public that powers may be exercised in surrounding areas of the PA/PP

For more information on the IPA or CPS,  
please visit [CPS website](https://www.cps.gov.sg) or email your queries to [SPF\\_CPS@spf.gov.sg](mailto:SPF_CPS@spf.gov.sg).

